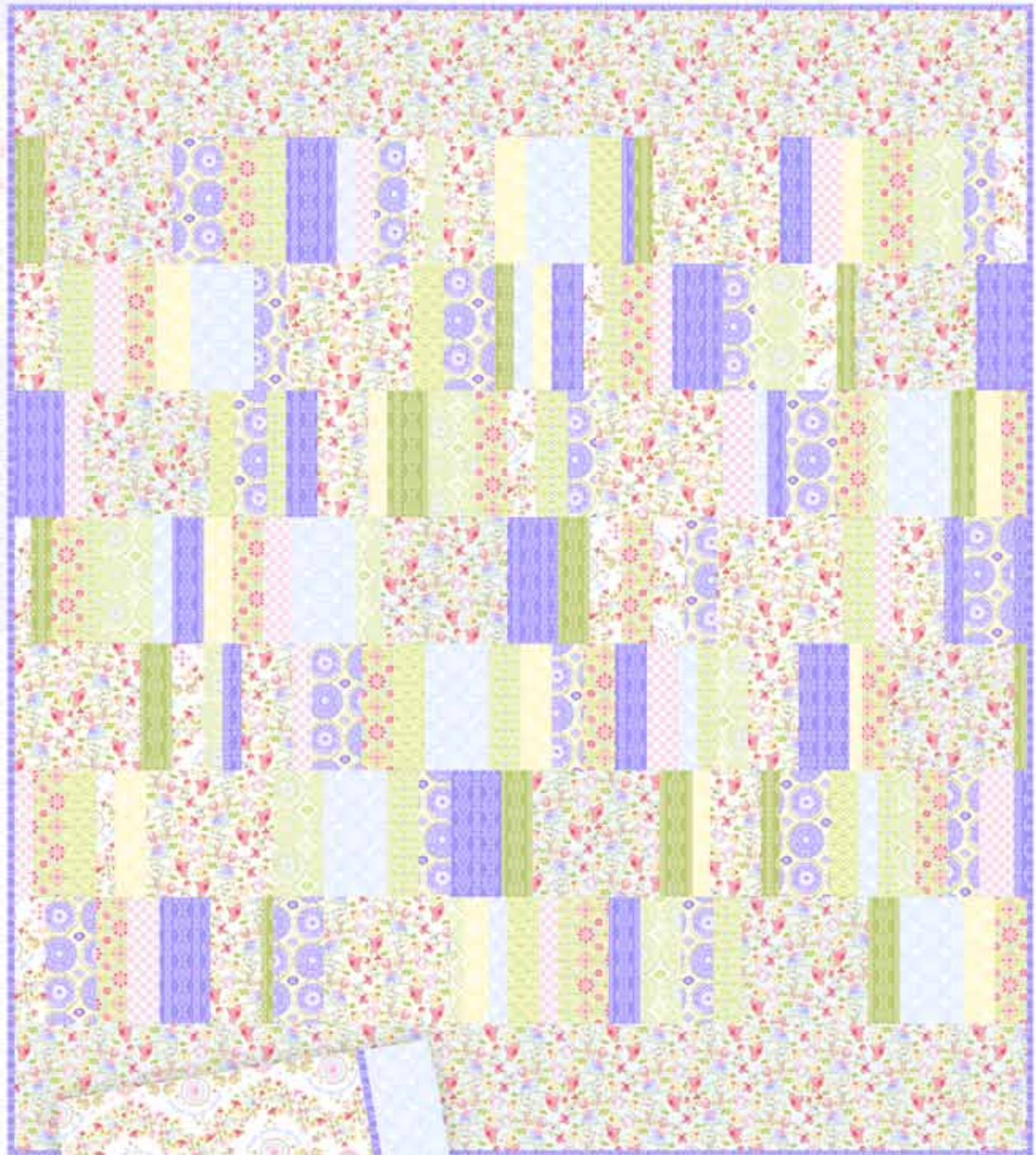


# Bohemian Dream Quilt



## Important Notes

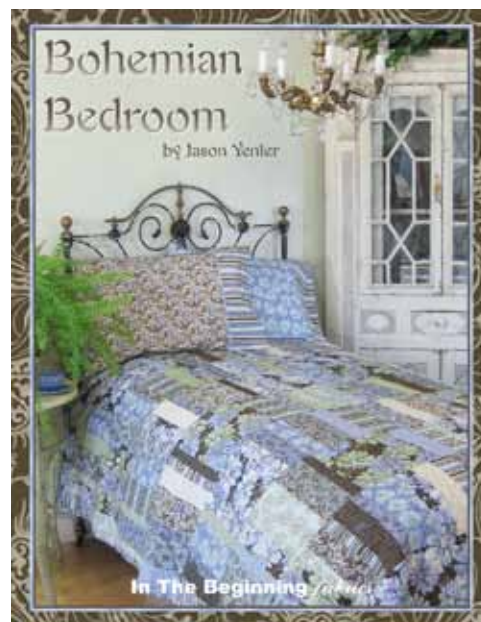
- This insert has the **Materials** list and **Cutting** instructions for making the “**Bohemian Manor**” quilt (Full Size) using fabric from the *Dream a Little Dream* collection.
- You will need a copy of the *Bohemian Bedroom* pattern, by Jason Yenter, for the complete instructions.
- The sample quilt was done digitally, and your real quilt will probably have some minor differences in terms of fabric placement.

## Materials

*Yardage requirements are based on 40" fabric width.*

- 2½ yds. Blue Large Floral (1KBB4) for top and bottom borders
- 1⅞ yds. White Large Floral (1KBB3)
- ¾ yd. Green Wreaths Multi (4KBB3)
- ¾ yd. Blue Wreaths Tonal (7KBB4)
- ⅔ yd. Green Large Tilework (3KBB2)
- ¾ yd. Blue Large Tilework (3KBB3)
- ⅝ yd. Green/Blue Daisy Grid (5KBB3)
- ⅝ yd. Green/Orange Daisy Grid (5KBB2)
- ⅝ yd. Green Stripe Tonal (8KBB2)
- 1¾ yds. Blue Stripe Tonal (8KBB3)
- ⅝ yd. White Swag Floral (2KBB2)
- ⅝ yd. Yellow Wreaths Tonal (7KBB2)
- ⅝ yd. Blue Small Floral Grid (6KBB3)
- 8¾ yds. for backing (lengthwise seams)

**FINISHED QUILT SIZE: 80½" x 90½"**



## Cutting

*Cut strips across width of fabric, unless otherwise instructed.*

*From Blue Large Floral, cut:*

- 2 lengthwise strips, 10½" x 80½", for top and bottom borders
- 7 squares, 10½" x 10½"

*From White Large Floral, selectively cut:*

- 7 squares, 10½" x 10½"
- 7 rectangles, 4¼" x 10½"

*From Green Wreaths Multi, cut:*

- 18 rectangles, 3" x 10½"

*From Blue Wreaths Tonal, cut:*

- 7 rectangles, 5½" x 10½"
- 7 rectangles, 1¾" x 10½"

*From Green Large Tilework, cut:*

- 7 rectangles, 4¼" x 10½"
- 7 rectangles, 1¾" x 10½"

*From Blue Large Tilework, cut:*

- 7 rectangles, 4¼" x 10½"
- 10 rectangles, 3" x 10½"

*From Green/Blue Daisy Grid, cut:*

- 7 rectangles, 3" x 10½"
- 7 rectangles, 1¾" x 10½"

*From Green/Orange Daisy Grid, cut:*

- 8 rectangles, 3" x 10½"

*From Green Stripe Tonal, cut:*

- 7 rectangles, 3" x 10½"
- 7 rectangles, 1¾" x 10½"

*From Blue Stripe Tonal, cut:*

- 9 strips, 2½" x 40", for double-fold binding
- 7 rectangles, 4¼" x 10½"
- 13 rectangles, 3" x 10½"
- 7 rectangles, 1¾" x 10½"

*From White Swag Floral, cut:*

- 7 rectangles, 3" x 10½"
- 7 rectangles, 1¾" x 10½"

*From Yellow Wreaths Tonal, cut:*

- 7 rectangles, 3" x 10½"
- 7 rectangles, 1¾" x 10½"

*From Blue Small Floral Grid, cut:*

- 7 rectangles, 3" x 10½"
- 7 rectangles, 1¾" x 10½"