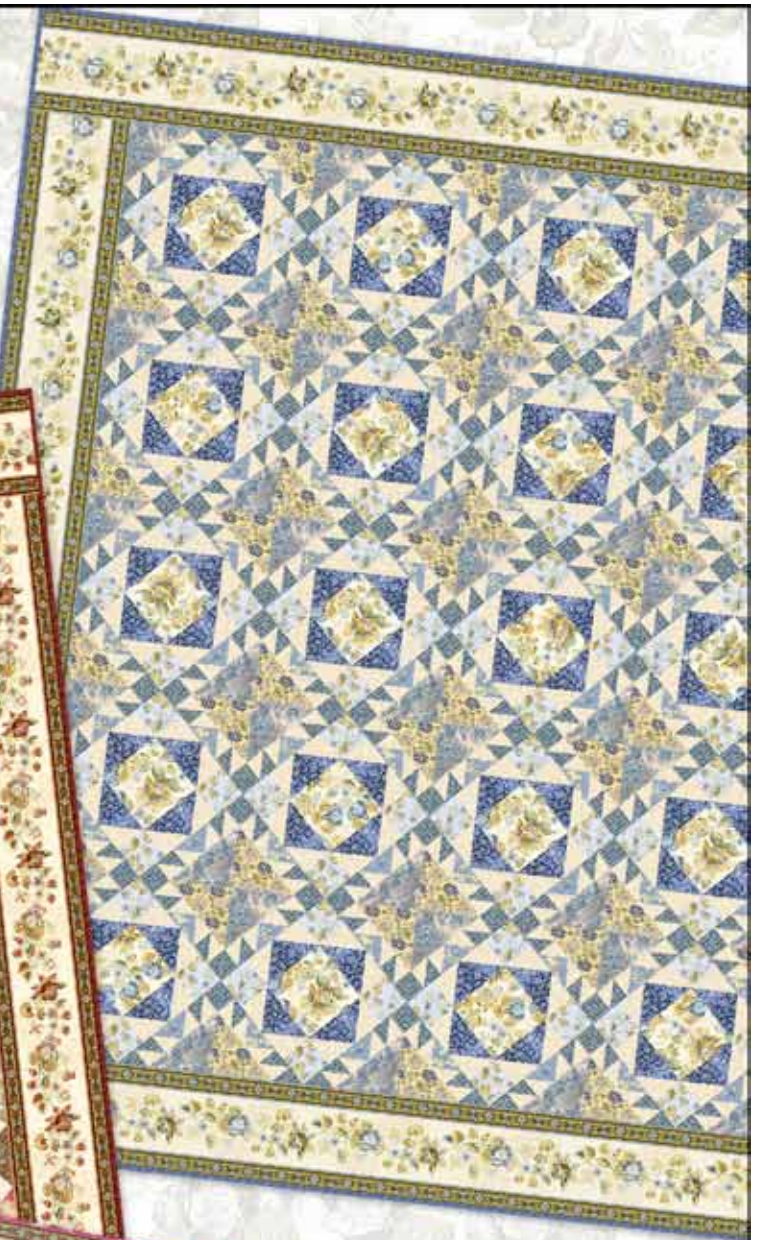


# Splendor II

by Jason Yenter



**In The Beginning** *fabrics*

**FINISHED BLOCK SIZE: 12" x 12"**

**FINISHED QUILT SIZE: 87" x 104"**

- A separate materials list is given for each of the three quilts.
- Yardages are based on 40" fabric width.

### **Materials: Red/Green Quilt**

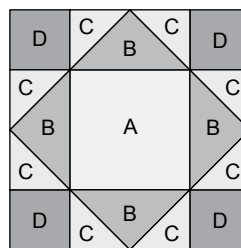
7/8 yd. Red/Gold Large Floral (1SPB1) for blocks  
5/8 yd. Olive Floral Vine (3SPB1) for blocks  
1 yd. Red Medium Floral (4SPB1) for blocks  
1 1/4 yds. Red/Brown Floral Stripe (5SPB1) for blocks  
1 1/8 yds. Red/Ecru Small Floral (6SPB1) for blocks  
1 1/8 yds. Russet Tonal Vine (7SPB1) for blocks  
2 3/8 yds. Ecru Tiles (8SPB4) for blocks  
1 1/8 yds. Red Bird Toile (5FB202) for blocks  
2 3/4 yds. Red/Brown Border Stripe (2SPB1) for border  
7/8 yd. Russet Tiles (8SPB1) for binding  
8 1/2 yds. for backing (horizontal seams)

### **Materials: Blue Quilt**

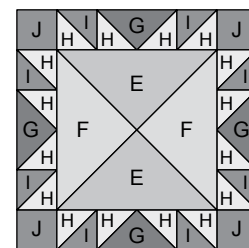
7/8 yd. Blue/Yellow Large Floral (1SPB2) for blocks  
5/8 yd. Blue Floral Vine (3SPB2) for blocks  
1 yd. Blue Medium Floral (4SPB2) for blocks  
1 1/4 yds. Blue Floral Stripe (5SPB2) for blocks  
1 1/8 yds. Blue/Yellow Small Floral (6SPB2) for blocks  
1 1/8 yds. Blue Tonal Vine (7SPB2) for blocks  
2 3/8 yds. Ecru Tiles (8SPB4) for blocks  
1 1/8 yds. Blue Bird Toile (5FB18) for blocks  
2 3/4 yds. Blue/Yellow Border Stripe (2SPB2) for border  
7/8 yd. Blue Tiles (8SPB2) for binding  
8 1/2 yds. for backing (horizontal seams)

### **Materials: Rose Quilt**

7/8 yd. Rose/Blue Large Floral (1SPB3) for blocks  
5/8 yd. Rose Floral Vine (3SPB3) for blocks  
1 yd. Rose Medium Floral (4SPB3) for blocks  
1 1/4 yds. Rose Floral Stripe (5SPB3) for blocks  
1 1/8 yds. Rose/Green Small Floral (6SPB3) for blocks  
1 1/8 yds. Olive Tonal Vine (7SPB3) for blocks  
2 3/8 yds. Ecru Tiles (8SPB4) for blocks  
1 1/8 yds. Green Bird Toile (5FB65) for blocks  
2 3/4 yds. Rose/Blue Border Stripe (2SPB3) for border  
7/8 yd. Rose Tiles (8SPB3) for binding  
8 1/2 yds. for backing (horizontal seams)



Block A



Block B

### **Cutting**

One set of cutting instructions is given, and can be used for any of the three quilts. Fabrics are cut in order given in Materials lists. Cut strips across width of fabric, unless otherwise instructed.

*From Large Floral, cut:*

- 4 strips, 6 1/2" x 40"; crosscut 20 squares, 6 1/2" x 6 1/2", for A squares

*From Floral Vine, cut:*

- 3 strips, 5 1/4" x 40"; crosscut 20 squares, 5 1/4" x 5 1/4"; cut each square twice diagonally to make 80 of triangle G

*From Medium Floral, cut:*

- 8 strips, 3 1/2" x 40"; crosscut 80 squares, 3 1/2" x 3 1/2", for D squares

*From Floral Stripe, cut:*

- 8 strips, 2 7/8" x 40"; crosscut 98 squares, 2 7/8" x 2 7/8"; cut each square once diagonally to make 196 of triangle I
- 4 strips, 2 1/2" x 40"; crosscut 62 squares, 2 1/2" x 2 1/2", for J squares

*From Small Floral, cut:*

- 3 strips, 9 1/4" x 40"; crosscut 10 squares, 9 1/4" x 9 1/4"; cut each square twice diagonally to make 40 of triangle F

*From Tonal Vine, cut:*

- 4 strips, 7 1/4" x 40"; crosscut 20 squares, 7 1/4" x 7 1/4"; cut each square twice diagonally to make 80 of triangle B

*From Ecru Tiles, cut:*

- 8 strips, 3 7/8" x 40"; crosscut 80 squares, 3 7/8" x 3 7/8"; cut each square once diagonally to make 160 of triangle C
- 13 strips, 2 7/8" x 40"; crosscut 160 squares, 2 7/8" x 2 7/8"; cut each square once diagonally to make 320 of triangle H

*From Bird Toile, cut:*

- 3 strips, 9 1/4" x 40"; crosscut 10 squares, 9 1/4" x 9 1/4"; cut each square twice diagonally to make 40 of triangle E

*From Border Stripe, cut:*

- 4 strips, 9 3/4" x length of fabric, for border (Selectively cut strips to get the portion of stripe design – plus seam allowance – as shown in photograph.)

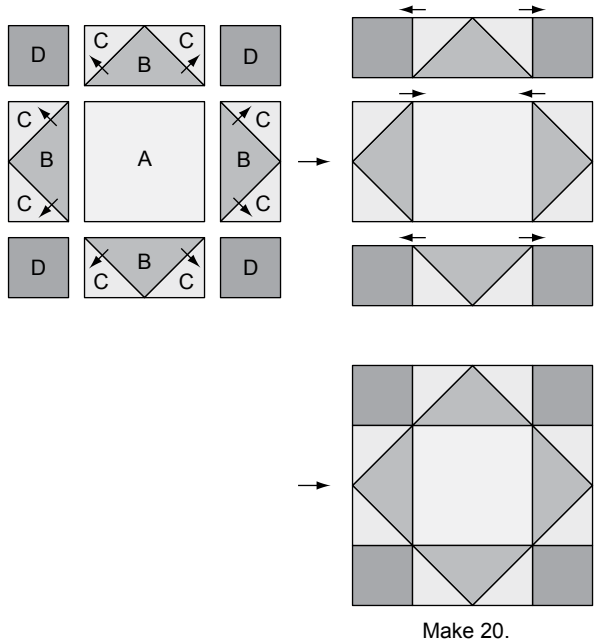
*From Russet Tiles (Red/Green Quilt) -OR- Blue Tiles (Blue Quilt) -OR- Rose Tiles (Rose Quilt), cut:*

- 10 strips, 2 1/2" x 40", for double-fold binding

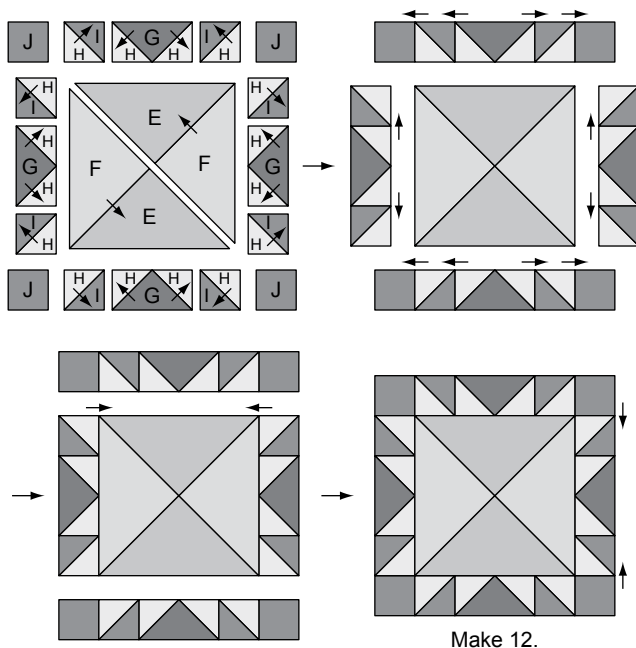
## Block Assembly

All seams  $\frac{1}{4}$ ". Press seams in direction of arrows unless otherwise instructed. Assembly instructions are the same for all three quilts. Refer to photographs for fabric placement.

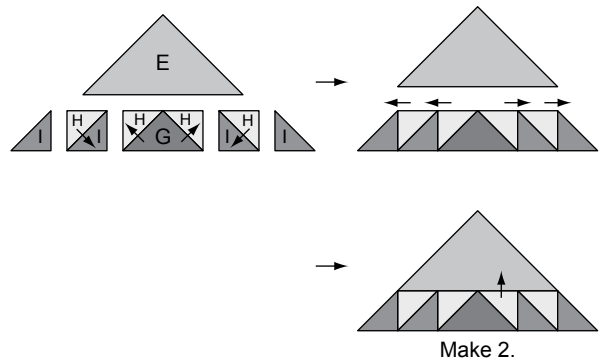
- Using 1 A square, 4 B triangles, 8 C triangles, and 4 D squares, assemble a Block A as shown. Repeat to make a total of 20 blocks.



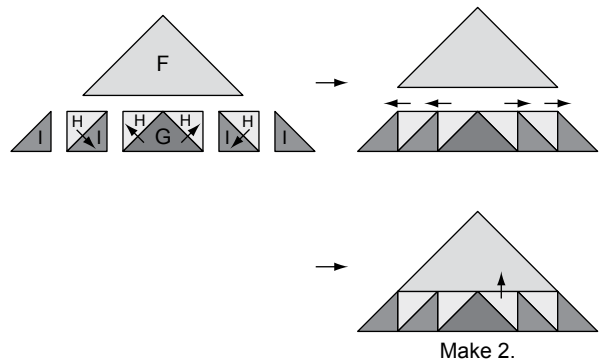
- Using 2 E triangles, 2 F triangles, 4 G triangles, 16 H triangles, 8 I triangles, and 4 J squares, assemble a Block B as shown. Repeat to make a total of 12 blocks.



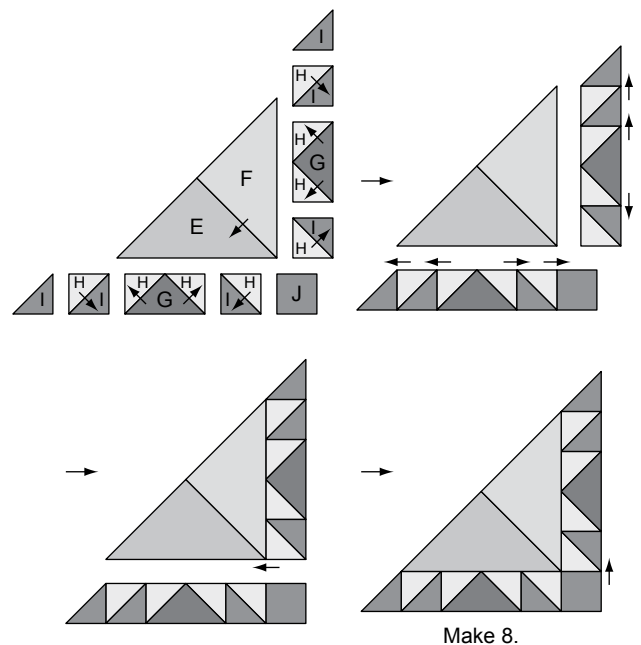
- Using 1 E triangle, 1 G triangle, 4 H triangles, and 4 I triangles, assemble a corner unit as shown. Repeat to make a total of 2 units.



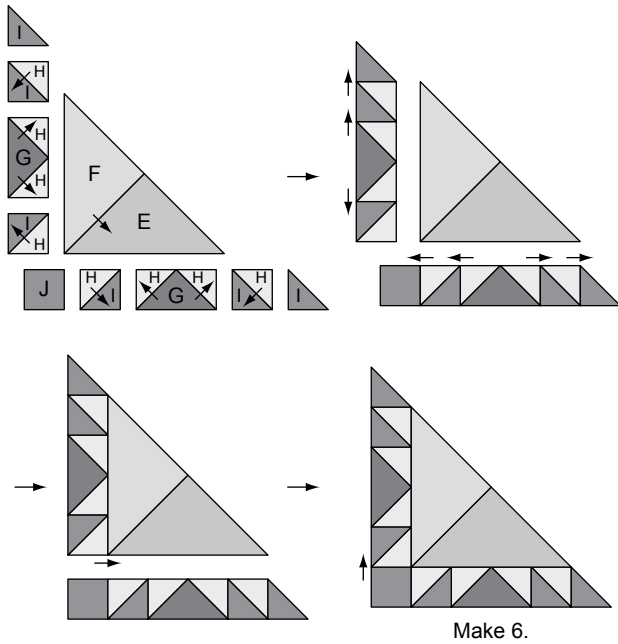
- Using 1 F triangle, 1 G triangle, 4 H triangles, and 4 I triangles, assemble a corner unit as shown. Repeat to make a total of 2 units.



- Using 1 E triangle, 1 F triangle, 2 G triangles, 8 H triangles, 6 I triangles, and 1 J square, assemble a side unit, making sure that the pieces are oriented as shown. Repeat to make a total of 8 units.



6. Using 1 E triangle, 1 F triangle, 2 G triangles, 8 H triangles, 6 I triangles, and 1 J square, assemble a side unit, making sure that the pieces are oriented as shown. (This makes a mirror image of the unit in Step 5.) Repeat to make a total of 6 mirror-image units.



## Quilt Top Assembly

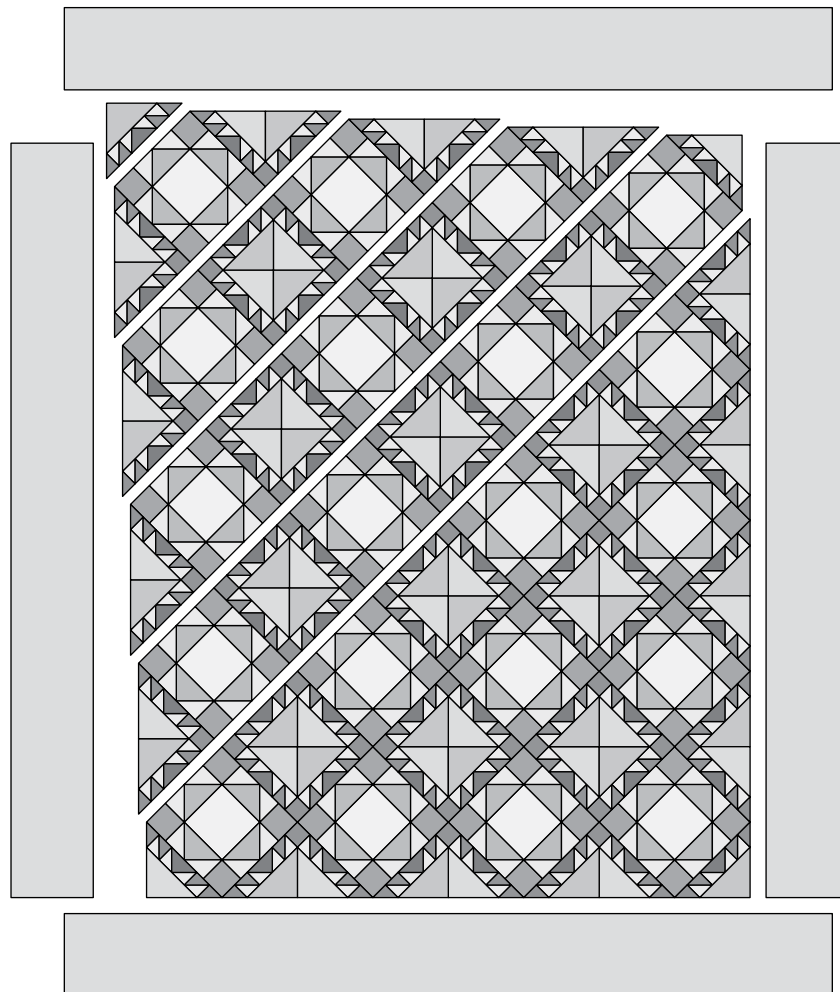
1. Referring to photographs for placement, sew Block As, Block Bs, side units, and corner units together in diagonal rows as shown in the Quilt Assembly Diagram below. Press seams toward Block As.
2. Sew rows together. Press seams in one direction.

## Borders

1. Measure length of quilt top through center. Trim 2 border strips to this measurement, and sew to sides of quilt. Press seams toward borders.
2. Measure width of quilt top, including borders just added, through center. Trim remaining 2 border strips to this measurement, and sew to top and bottom of quilt. Press seams toward borders.

## Finishing

Layer quilt top, batting, and backing. Quilt as desired. Bind. Don't forget to sign and date your finished quilt.



Quilt Assembly Diagram